

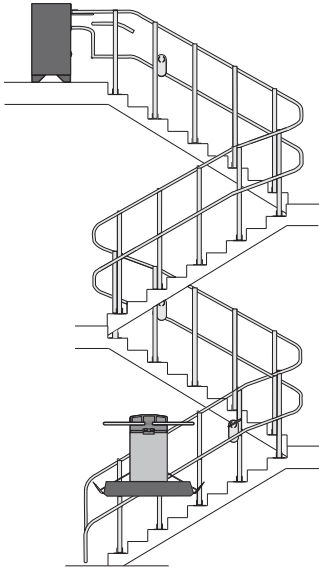


# Artira

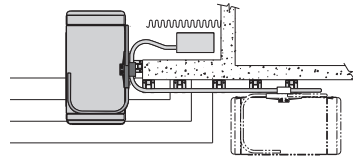
Inclined Platform Lift For Straight And Turning Stairways

# Technical Information

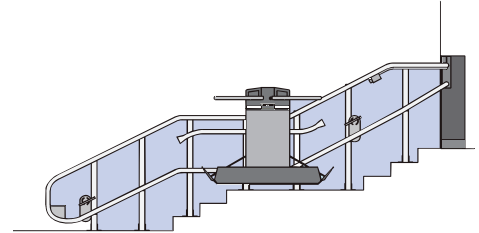
## Configurations



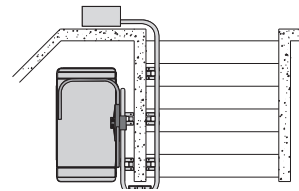
Turning Multi-Stop Stairway



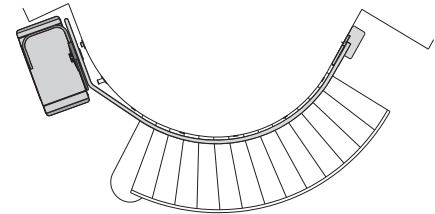
Access onto a Stage



Straight Stairway with Intermediate Horizontal Section



Straight Stairway with Platform Storage off the Stairs



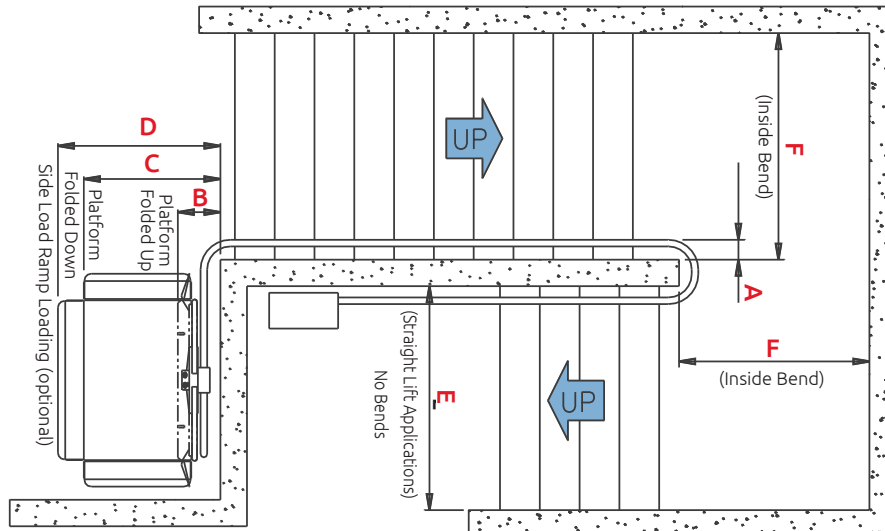
Radiating Stairway

## Specifications

Load Capacity	300 Kg (660 Lbs.) up to 45° stair angle for commercial/public use
Power Requirements	208-240 VAC, 50/60 Hz on a dedicated 20 amp circuit
Platform Sizes	4 standard sizes including large ADA-compliant 800 mm x 1220 mm (31.5" x 48") platform.
Attachment	Mounted directly to a wall or attached to stair treads using support towers (requires sufficient substrate strength).
Controls	Smart-Lite Technology™ guides the user through operation by illuminating the appropriate button. Safety code requires continuous pressure on control buttons to operate the lift (keep button depressed to keep moving). Buttons are large and easy to use for everyone.
Platform Storage	Folded platform conceals and protects safety barrier arms and platform controls from vandalism.
Standard Finishes	Indoor units - RAL 7030 fine texture Satin Grey. Outdoor - bead blasted and electropolished stainless steel. Optional RAL colors available.
Standard Safety Features	Under-platform obstruction sensors, pedestrian safety lights, bi-directional ramp obstruction sensors, emergency manual folding and lowering, curved safety barrier arms, overspeed safety
Optional Features	Attendant remote control, under hanger sensors, side of hanger sensors, automatic platform fold, fold-down seat and seatbelt, building fire alarm integration, side load for confined lower landings, wall-mount pedestrian audio-visual alert, pedestrian handrails integrated in to support rail system.

# Dimensions

## Turning Clearances



## Platform Sizes

Dim.	Attachment Method	800 x 1220 mm (31 1/2" x 48")		800 x 1050 mm (31 1/2" x 41 3/8")		800 x 900 mm (31 1/2" x 35 3/8")		700 x 750 mm (27 1/2" x 29 1/2")	
		mm	in	mm	in	mm	in	mm	in
<b>A</b>	Direct Mount	125	4 7/8	125	4 7/8	125	4 7/8	125	4 7/8
	Tower Mount	150	5 7/8	150	5 7/8	150	5 7/8	150	5 7/8
<b>B</b>	Direct Mount	320	12 5/8	320	12 5/8	320	12 5/8	330	13
	Tower Mount	345	13 5/8	345	13 5/8	345	13 5/8	355	14
<b>C</b>	Direct Mount	1015	40	1015	40	1015	40	900	35 3/8
	Tower Mount	1040	41	1040	41	1040	41	925	36 3/8
<b>D</b>	Direct Mount	1230	48 3/8	1230	48 3/8	1230	48 3/8	1115	44
	Tower Mount	1255	49 3/8	1255	49 3/8	1255	49 3/8	1140	45
<b>E</b>	Direct Mount	1035	40 3/4	1035	40 3/4	1035	40 3/4	920	36 1/4
	Tower Mount	1060	41 3/4	1060	41 3/4	1060	41 3/4	945	37 1/4
<b>F</b>	Direct Mount	1225	48 1/4	1185	46 5/8	1145	45 1/8	1025	40 3/8
	Tower Mount	1250	49 1/4	1210	47 5/8	1170	46 1/8	1050	41 3/8




---

**Garaventa Lift**

**T** 604 594 0422 · **T** 800 663 6556 (toll free North America)  
**E** [info@garaventalift.com](mailto:info@garaventalift.com) · **I** [www.garaventalift.com](http://www.garaventalift.com)

Authorized Garaventa Lift Representative

© Garaventa Lift. As we are continuously improving our products, specifications outlined in this brochure are subject to change without notice.

 Printed in Canada  
15814-N-PB